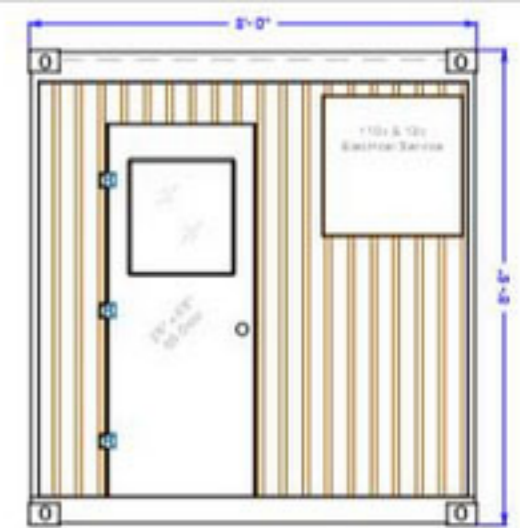
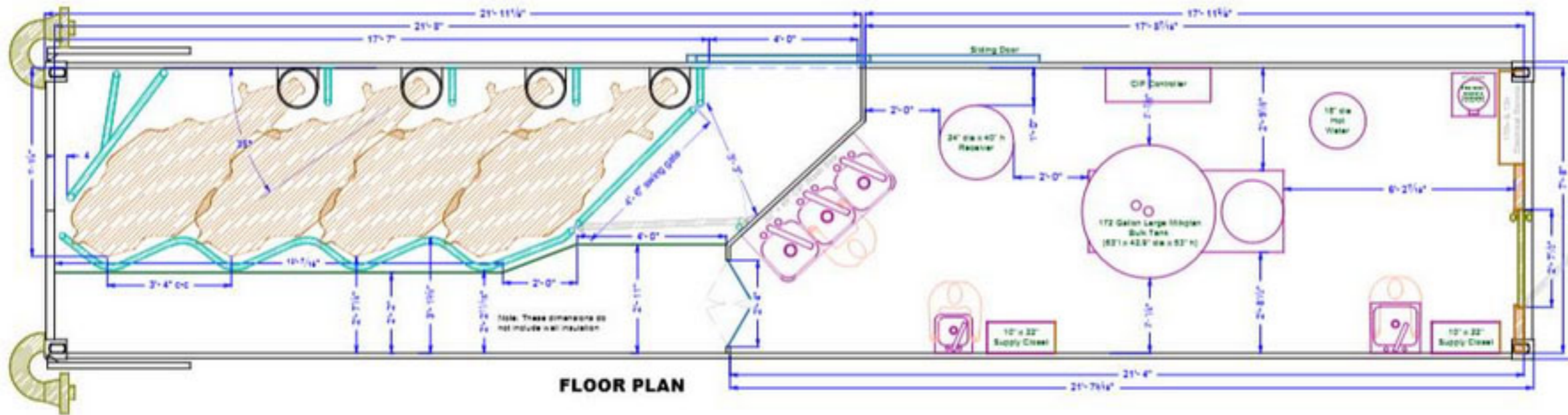


FRONT ELEVATION



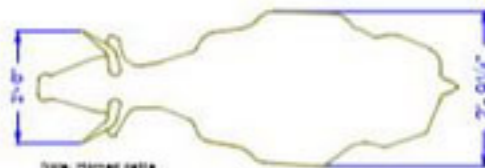
END VIEW



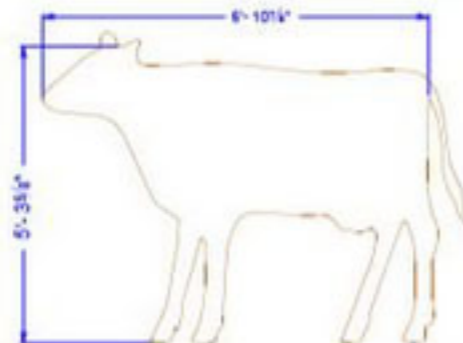
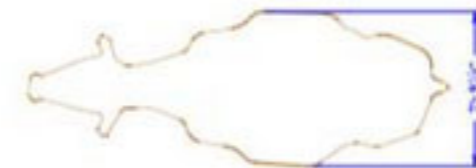
FLOOR PLAN

Notes:

1. This drawing is for conceptual purposes only and is not intended to serve as a production drawing or specification.
2. The equipment room end of the unit shall be elevated 6" at installation to facilitate drainage.
3. The onsite installation crew shall be responsible for cutting the 45° cattle exit door through the sidewall of the container, and installing the exterior sliding door.
4. The floor system, wall liners, interior partition wall and door shall be constructed from 304 stainless steel.
5. The ceiling of the container shall be painted, and the roof of the container shall have a coating of reflective paint applied.
6. All gatework shall be hot dipped galvanized.
7. The platform and walkway floor in the milking parlor shall be coated with Polylast™, non-slip antimicrobial dairy flooring.
8. Manufacturer shall provide a separate equipment platform to accommodate the rooftop solar panels, water storage, generator and vacuum pump. The platform shall be shipped inside the container and shall be mounted on the roof of the container during onsite installation.
9. The container shall be re-certified prior to any modifications.



Note: Normal cattle dimensions are an approximation only.



**Design Reference
Basic Animal
& Human
Dimensions**



PARLOR SPECIFICATIONS

Cattle Capacity	2	2
Herringbone Angle	35 deg	35 deg
Cattle Spacing	1016 mm	40"
Platform Height	203.2 mm	8"

ISO SPECIFICATIONS

Container Type	40' ISO, Standard
Condition	Used / Re-certified
Door Style	Double End Doors
Exterior Length	12,192 mm - 40'-0"
Exterior Width	2438 mm - 8'-0"
Exterior Height	2891 mm - 9'-6"
Volume	67.5 m ³ - 2388 ft ³

Interior Length	12,032 mm - 39'-6 4/8"
Interior Width	2311 mm - 7'-6 13/32"
Interior Height	2690 mm - 7'-9 5/8"
Floorspace	27.81 m ² - 304.60 ft ²
Door Width	2343 mm - 7'-8 1/2"
Door Height	2280 mm - 7'-6 3/4"
Max Gross Weight	30,400 kg - 66,139 lbs
Empty Weight	3900 kg - 8380 lbs

Scoring Ag Equipment
A DIVISION OF SCORINGAG, INC.

04-354008
Milk Shed® by ScoringAg
made in USA

20220228
Brewster Mfg Inc.
Lynch, MO 64626, USA
(402) 687-2855
(www.brewster.com)

20220228
Bob-White Systems, Inc.
Haystack, VA, USA 23088
(804) 763-2777
(www.bobwhite.com)

Milk Shed® Copyright by Scoring Ag, Inc.
Sarasota, FL 34241, USA
(www.ScoringAg-Equipment.com)
(941) 926-3400
info@scoringag.com

MILK SHED® 4 COW, 8" RAISED PLATFORM,
35 DEGREE HERRINGBONE, 40" c-c SPACING

Author	None	Code	0000	Date	12/22/2016	Page	1 of 1	Rev	A
--------	------	------	------	------	------------	------	--------	-----	---

OPTION 25 Plan & Profile Layout

